

Reata Ridge Village

NEC Parker Road & Stroh Road
Parker, Colorado



BUILDINGS 'A' AND 'B' ELEVATION



OFFICE ELEVATION



BUILDING 'C' ELEVATION

The warmth of the sun. The colors of Tuscany. The intimacy of a village. Reata Ridge Village combines all of the best elements of a mixed-use experience: attention to detail, rich amenities, thoughtful co-tenancy, and a true shop, live, work, and play destination in a warm, village setting in Parker, Colorado.

Reata Ridge Village

NEC Parker Road & Stroh Road
Parker, Colorado

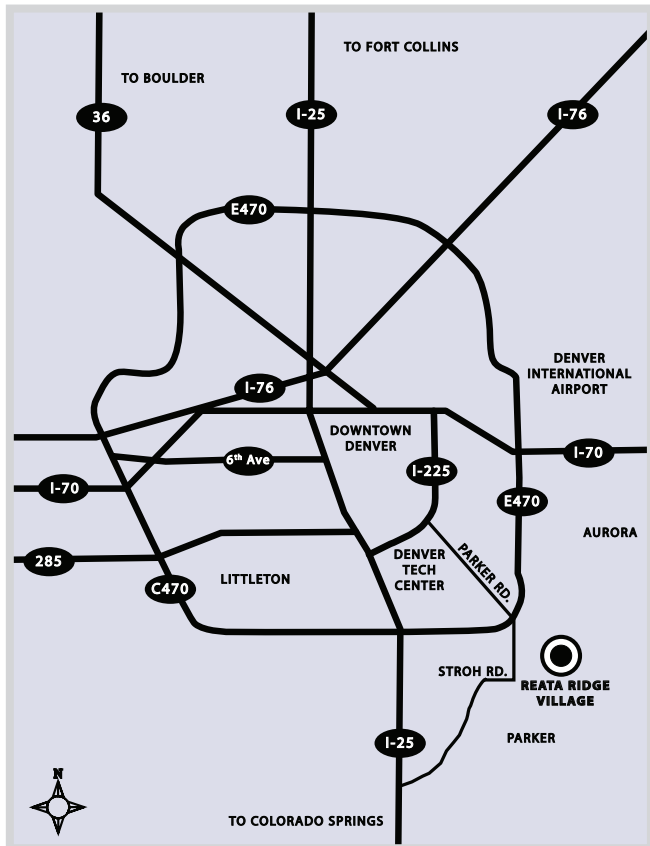
Demographics

	5 Mile	10 Mile	15 Mile
2008 Estimate Population	70,690	259,248	643,450
2013 Projected Population	89,811	327,165	737,918
2008 Est. Average Household Income	\$113,348	\$118,954	\$99,983

Traffic Counts

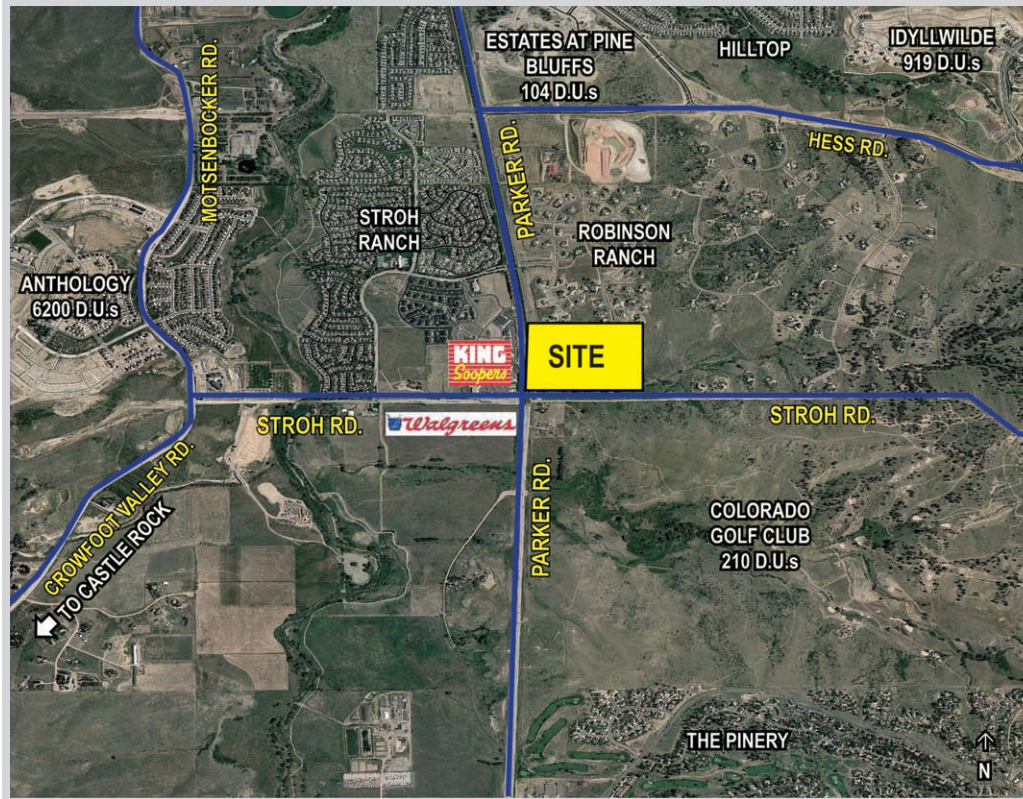
Parker Road at Stroh Road	30,000 VPD
Stroh Road at Parker Road	8,880 VPD

* Source Claritas Site Reports



Reata Ridge Village

NEC Parker Road & Stroh Road
Parker, Colorado



SERVICESTAR

ServiceStar Development Company LLC

5613 DTC Parkway, Suite 800
Greenwood Village, CO 80111
Phone: 720.529.2840
Fax: 720.529.2841
www.servicestarus.com

Leasing Information

Joe Beck
Sullivan Hayes
303.534.0900
joebeck@sullivanhayes.com

Chad Knoth
Sullivan Hayes
303.534.0900
cknoth@sullivanhayes.com