

Foxfield Village Center

SEC Parker Road & Arapahoe Road
Foxfield, Colorado



Foxfield Village Center is located at the most traveled, high-traffic intersection in southeast Denver. Join *Walgreen's*, *Qdoba*, *Dairy Queen*, *Waterway*, and *Firestone* at this ideally positioned neighborhood retail center. Foxfield Village Center is immediately across the street from a 750,000 square foot regional shopping destination and a 16-screen movie theater. Foxfield Village Center offers tenants excellent visibility, outstanding traffic counts, easy access, strong demographics, and a large daytime population.

Foxfield Village Center

SEC Parker Road & Arapahoe Road
Foxfield, Colorado

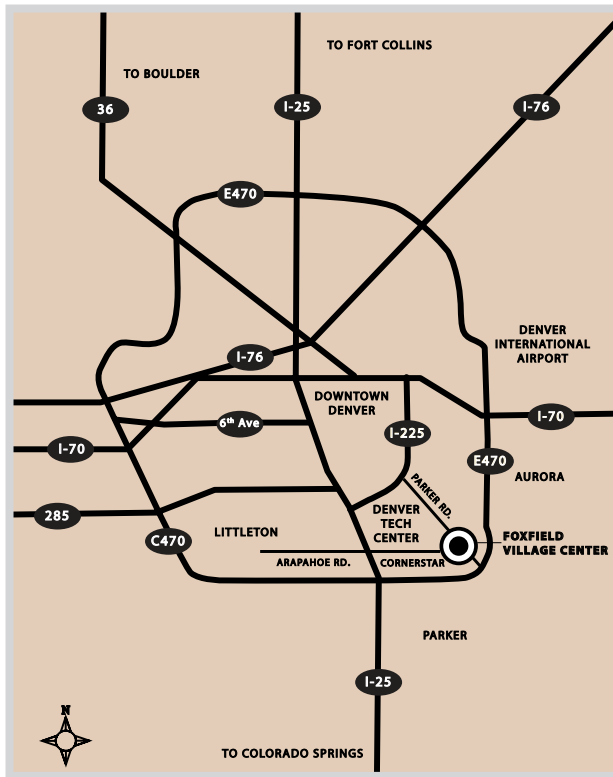
Demographics

	1 Mile	3 Mile	5 Mile
2008 Estimate Population	2,606	71,155	203,275
2013 Projected Population	3,673	83,089	235,547
2008 Est. Average Household Income	\$217,418	\$111,893	\$101,363

* Source Claritas Site Reports

Traffic Counts

Parker Road at Arapahoe Road	109,300 VPD
Arapahoe Road at Parker Road	63,339 VPD

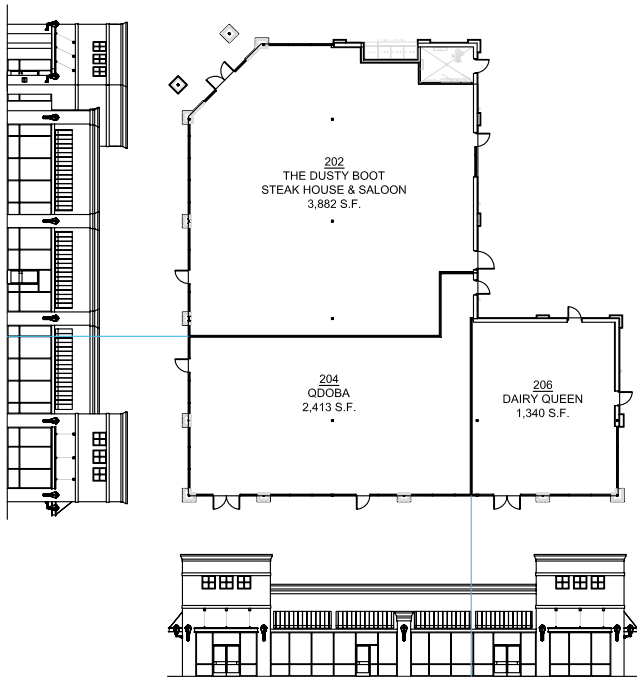


Foxfield Village Center

SEC Parker Road & Arapahoe Road
Foxfield, Colorado

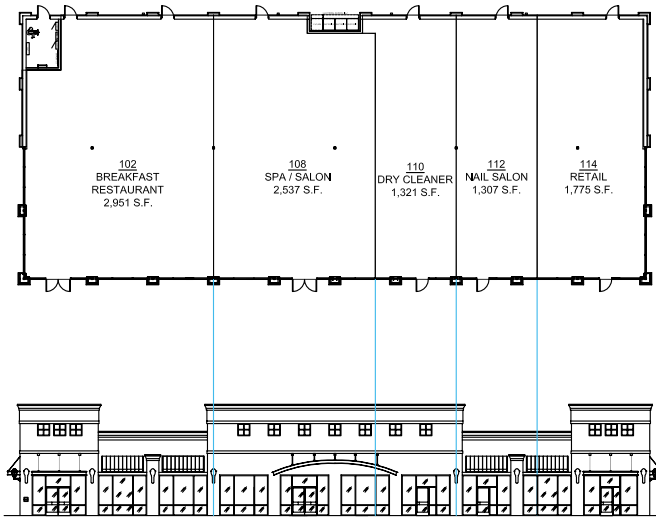
Projected Occupancy Plan

Retail Building 1: 7,635 Sq. Ft. Gross Leasable Area



Projected Occupancy Plan

Retail Building 2: 9,891 Sq. Ft. Gross Leasable Square Area



SERVICESTAR

ServiceStar Development Company LLC

5613 DTC Parkway, Suite 800
Greenwood Village, CO 80111
Phone: 720.529.2840
Fax: 720.529.2841
www.servicestarus.com

Leasing Information

Michael E. Mastro
720.529.2848
mmastro@servicestarus.net

