

# Butterfield Village Center

SEC Butterfield Road & Farnsworth Avenue (Kirk Road)  
Aurora, Illinois



With a prominent daytime population and strong new residential growth, Butterfield Village Center is located in immediate proximity to the very successful Chicago Premium Outlet Mall in Aurora, Illinois. In addition, this neighborhood retail center neighbors Fermi Lab, a major area employer. Butterfield Village Center benefits from strong demographics, high traffic counts, new residential growth and adjacent retail co-tenancy.

# Butterfield Village Center

SEC Butterfield Road & Farnsworth Avenue (Kirk Road)  
Aurora, Illinois

## Demographics

	1 Mile	3 Mile	5 Mile
2008 Estimate Population	3,083	52,761	195,437
2013 Projected Population	3,763	60,286	216,282
2008 Est. Average Household Income	\$107,448	\$90,198	\$76,586

\* Source Claritas Site Reports

## Traffic Counts

Farnsworth Avenue (Kirk Road) at Butterfield Road	28,000	VPD
Butterfield Road at Farnsworth Avenue (Kirk Road)	17,400	VPD

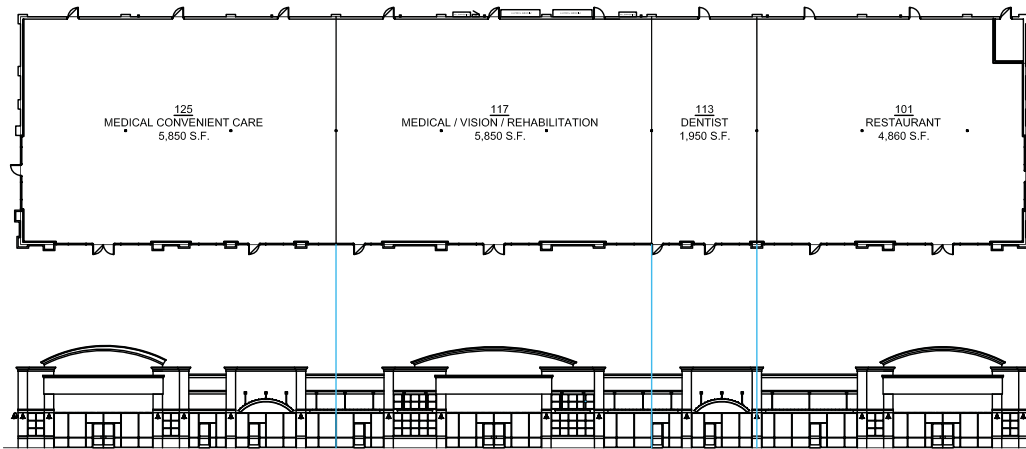


# Butterfield Village Center

SEC Butterfield Road & Farnsworth Avenue (Kirk Road)  
Aurora, Illinois

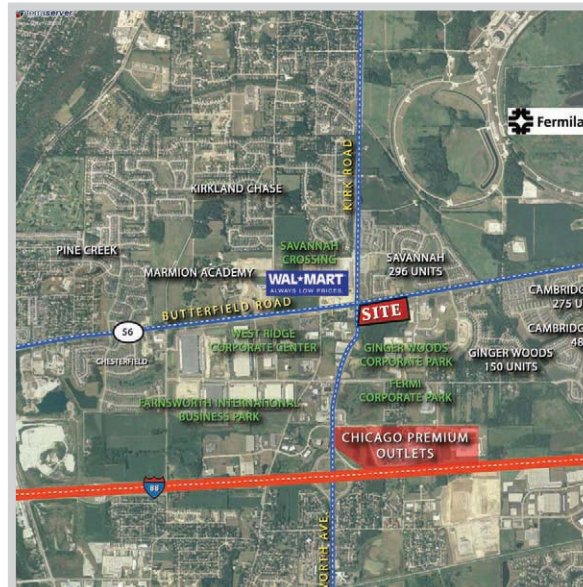
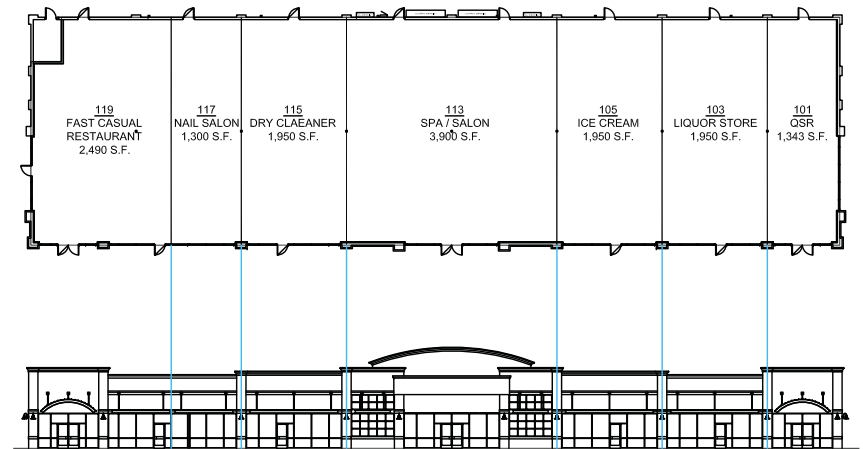
## Projected Occupancy Plan

Retail Building 2: 18,510 Sq. Ft. Gross Leasable Area



## Projected Occupancy Plan

Retail Building 1: 14,883 Sq. Ft. Gross Leasable Area



SERVICESTAR

ServiceStar Development Company LLC  
5613 DTC Parkway, Suite 800  
Greenwood Village, CO 80111  
Phone: 720.529.2840  
Fax: 720.529.2841  
www.servicestarus.com

Leasing Information  
Judd Lofchie  
Judd Lofchie & Associates, Inc.  
Phone: 630.236.3600  
judd@jlholdings.com